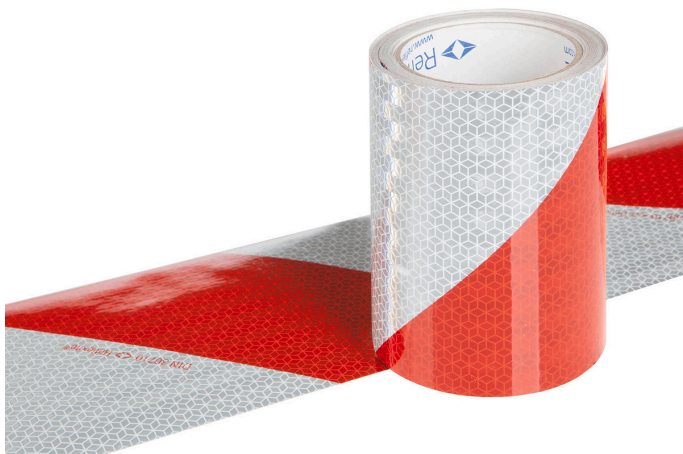


**Vehi. warning label refl. left 141mm-9m**

Material no.: 6000010664 | Matchcode: WAMA LI | EAN code: 4045294725730



- » retro-reflecting
- » strong adhesion
- » good durability
- » left-pointing
- » Delivery unit: roll 141 mm x 9 m

**Materials & Colour**

Colour: Red  
White


**Dimensions**

External dimensions: 141 x 110 x 110 mm

**Technical details**

Weight: 0,79 kg

**Accessories**

	Material no.	Description	Matchcode	EAN code
	1000002178	warning labels set for vehicles DIN 30710	WAMA FZS DIN 30710	4045294237202

### Vehi. warning label refl. left 141mm-9m

Material no.: 6000010664 | Matchcode: WAMA LI | EAN code: 4045294725730

#### Description

The self-adhesive film strips provide more safety in road traffic. The warning labels are highly reflective and thereby make your vehicle more visible for others.

The retro-reflective warning label is approved in accordance with DIN30710 for labelling of vehicle with special rights. The label has arrow symbols pointing left, i.e. the diagonal line runs from the lower left outer part of the vehicle to the upper right of the vehicle interior.

The label is easy to apply and distinguishes itself by good adhesion and durability. It can even withstand high pressure cleaning equipment and a car wash.

We reserve the right to make changes in the interest of technical progress, as well as correcting printing errors and mistakes. Pictures are similar, decorative material not included. With the publication of this data sheet, previous editions lose their validity. Version: 21.12.2023