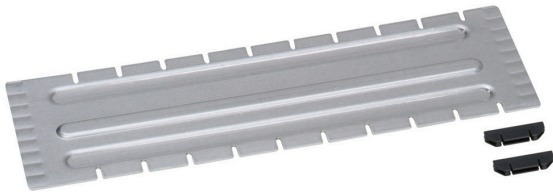


### slot divider 309x93 for metal case WM 330/331

Material no.: 5267740 | Matchcode: TB WM 330/309 | EAN code: 4014599267740



- » slot divider for metal case WM 330 and 331
- » enables individual sub-division across the width.
- » simple mounting
- » Simplified working through one-handed operation
- » individually adaptable interior

#### Materials & Colour

Material:	Steel Aluminium
Colour:	Silver

#### Dimensions

External dimensions:	309 x 93 x 2 mm
----------------------	-----------------

#### Technical details

Weight:	0,12 kg
---------	---------

#### Structure & Function



### slot divider 309x93 for metal case WM 330/331

Material no.: 5267740 | Matchcode: TB WM 330/309 | EAN code: 4014599267740

#### Description

The slot divider 309x93 mm serves to sub-divide the metal case WM 330 and 331 across the width. The slot divider can be simply deployed in the included serial production guide rail on the inside of the metal case WM. The slot divider has recesses in which you can insert plastic adapters for dividers 154x93 mm (Ref. No. 5267702). In combination with the dividers you achieve an additional division in the depth. The metal case WM 331 comes equipped with two slot dividers 309x93. It goes without saying that you can further sub-divide across the width with extra slot dividers. The compartments provide for organisation and clear arrangement within the metal cases WM 330 and 331.

We reserve the right to make changes in the interest of technical progress, as well as correcting printing errors and mistakes. Pictures are similar, decorative material not included. With the publication of this data sheet, previous editions lose their validity. Version: 29.02.2024